

# PREPARING FOR THE NEXT GENERATION OF COLLEGE HEALTH NURSES PART 3

## Presenters:

Mary Bey BSN Paula Jessen BSN MPA Donna Vose RNBC  
University of Connecticut

# GUIDING PRINCIPLES

Novice to Expert

Guided Process for Self-Learning

Participation To Empowerment

Self-Assured New College Health Nurse



# EXCELLENCE

# Current Job Description..Points to Consider

- Nursing Process
- Collegiality
- Education
- Ethics

# Job Description Criteria con't

- Research, TQI, Quality Practice
- Resource Utilization Leadership
- Professional Practice Evaluation
- Communication

# Develop Behavioral Competencies

.....Oh Do We Have TO?????????



# Develop Orienteer Behavioral Competencies

- **Prioritizes** care based on acuity and the student's need
- **Skillfully** conducts interview; physical exam and analyzes information to identify the problem and required care
- Observes the student according to their condition and utilizes assessment skills to make **changes** in care as needed
- Provides culturally sensitive care and incorporates the psychosocial needs of the student into the care plan. If needed **seeks assistance** when the needs of the student exceed their own experience and knowledge

# Behavioral Competencies con't

- Communicates effectively with the team and provides information in a clear, concise manner. **Recognizes** when additional information may be needed with any condition change.
- Complies with established policies and procedures @ SHS. Documents accurately and **completely**
- Respects the students' right to privacy; recognizes **HIPPA and FERPA** requirements
- Serves as an **advocate** for students; individualizes **comfort measures** to assist the student and **adjusts** teaching strategies to meet the needs of students

# Orientation Manual Content

- Welcoming Letter for new Employee
- SHS Mission Statement
- ACHA Standards of Nursing Practice
- Students Rights and Responsibilities
- Expected Behavioral Competencies



## Orientation Manual Table of Contents con't.

- **UCONN SHS College Health Nursing Skill Matrix**
- **Description of care Given by Clinical Ladder I,II,III**
- **Weekly Conference Questions**
- **Summary of Orientation Progress Week I,II,III**

# Orientation Manual Table of Contents con't

- **Copies of Modules Testing Forms**
- **Selected Available Resources**
- **Final Summary of SHS Orientation**
- **Orientation Preceptor Feedback Form**

# Orientation Process

Prior to Arrival :

- Welcome Letter by DON with Skill Matrix Self-Assessment to be completed and returned **before** start date
- Selection of Preceptor
- Returned matrix to Preceptor for development of orientation plan

# SKILLS MATRIX Sample

SKILL/PROCEDURE C= completed, initials	PRIORITY	Self-evaluation 1=performs indepen. 2=performs with help 3=has not perform.	Preceptor eval	6 month	1 year	
Patient Assessment	*					
Neurologic Assessment	*					
Documentation	*					
Nebulizer	*					
Flurostain of the eye						
Use of ultraviolet light						
Morgan Lens						
Snellen Chart	*					
Inserting/monitoring IVs	*					
Pregnancy testing	*					
Spirometry						

# Orientation First Day

- Tour
- Meet DON- Goals/Expectations/module testing/general overview/housekeeping
- Clinical Exposure
- Employee Health Screening
- Privacy and Security Training
- Recap of the day

## Orientation Day 2

- Computer orientation—password/practice, computer security
- Scavenger Hunt/Pyxis
- Skill Matrix review and testing competency
- POC validation, Hep B isolation/infection control
- Blood Borne pathogens, fit testing, chemical safety

# Orientation Day 3

- Skills evaluation—EKG, Nebulizer, Specimen Collection(urine, flu throat), lab, x-ray, pharmacy procedures
- Clinical Practice
- Care of Emergencies—e.g. anaphylaxis, behavioral emergencies, alteration mental status; use of narcan
- Recap of the day, skill checklist, module review

# Orientation Day 4

- Clinical Practice
- Insurance/billing
- Procedures-eye staining, high risk criteria, Snellen, ring removal, wound care
- Fire Safety, Lockdown
- Recap of the day, skill checklist, module review



## Orientation Day 5

- Women's' and Men's Health; Sexual Assault, Spirometry
- Ortho care, soft goods, crutch walking
- Hydro-flouric acid exposure
- Center for Students with Disabilities
- Clinical Practice; IV insertion/Maintainance
- Recap of the day, skill checklist, modules

# Orientation Evaluation

- Written summary each week of orientation and upon completion
- Orienteer prepares their evaluation of orientation process
- Formal orientation completed when all checklists, modules done and satisfactory completion of performance

# TOOLS



# Modules

- Content on selected topics
- May chose to read them  
but.....
- Required to pass all post tests

- **Introduction to SHS @ UCONN**
- **Overview of the Nursing Approach to the Care of Students**
- **Student with Mouth and Throat Conditions**
- **Food Bourne Illnesses**
- **Women's Health**
- **Men's Health**
- **Cultural Diversity and Competence**
- **IV Therapy**
- **Hydrofluoric Acid Exposure**

- **Commonly used Injectable Medications**
- **Eyes**
- **Suspected Concussions**
- **Introduction to Endocrine Disorders**
- **Musculoskeletal /Orthopedic Disorders**
- **Care of the Student with a Nosebleed**
- **Transgender Student**
- **Student with Abdominal Pain**

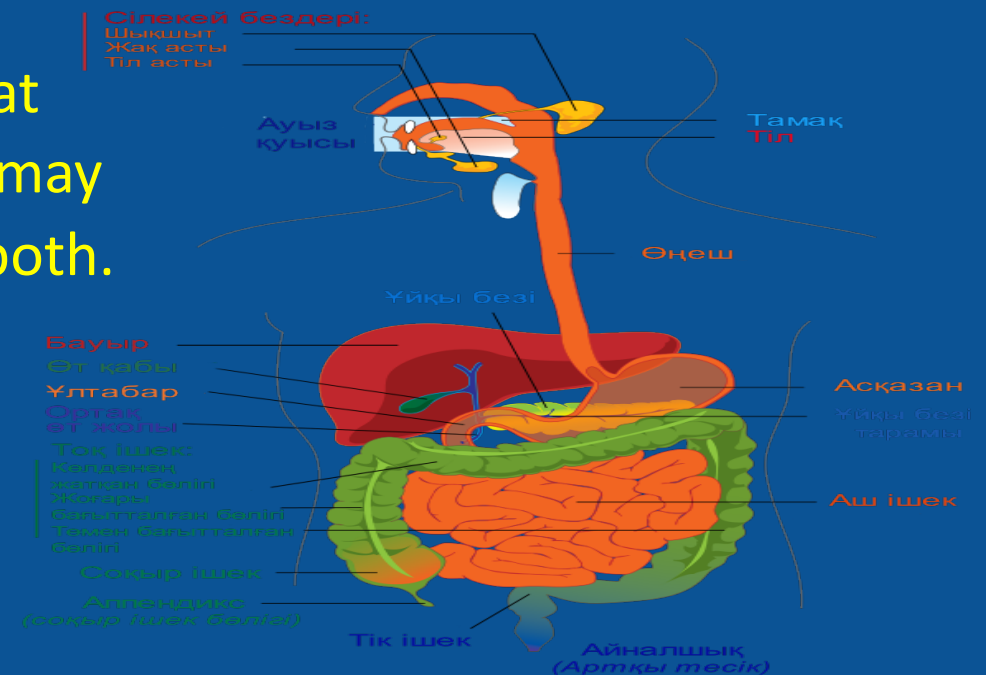
# MODULE SAMPLE

## • Care of the Student With Abdominal Pain

### Introduction

Students who present with abdominal pain present a challenge as their possible diagnosis may be as minor as constipation or as serious as internal bleeding from a bicycle fall 7-10 days ago.

Another unique factor with this complaint is that it may be caused by a plethora of things which may be physical, psychological or a combination of both.



# Sample of Module Post-Test

## True or False

1. If the student has a concussion they need to have experienced a loss of consciousness\_\_\_\_\_.
2. Cognitive rest is an important component for recovery\_\_\_\_\_.
3. Cognitive rest includes no computer/video/texting/loud music\_\_\_\_\_.
4. Concussion domains include the evaluation of their physical signs, coordination, sleep, cognition and mood\_\_\_\_\_.

# Orientation Scenario Orientation Tool

Scenario: 17 year old male complaining that he has been vomiting all day and has diarrhea

Presentation/response	Assessment Points	Poss Dx	Skill Competencies	Summary
Exhausted looking student	<ul style="list-style-type: none"><li>○ Permission to Rx</li><li>○ Need to lie down now?</li><li>○ Need infection control practices?</li><li>○ Complete vs plus orthostatic</li><li>○ Age specific, cultural needs</li><li>○ Student concerns?</li></ul>			
Obtain history	<ul style="list-style-type: none"><li>○ Frequency of vomiting/diarrhea, last episode?</li><li>○ Abdominal pain? Describe according to PQRST</li><li>○ Recent travel outside US?</li><li>○ Color of stool/vomit</li><li>○ Treatment prior to SHS</li><li>○ Last urination</li></ul>			



# Sample SHS First Floor Scavenger Hunt

- Please locate the following and forward this completed sheet to your preceptor:

Location of fire extinguishers	Location	Supply Room	Location
Suture Removal Kits		Transportation Bag	
Air Casts		Paper Shredders	
Large BP Cuffs		MSDS Book	
Nursing Reference Books		POC Testing Station	
Morgan Lens		Supply of Crutches	
Pulse Oximeter		Ring Cutter	

- Throughout your orientation there may be questions you have and need the answers for. Jot these down and discuss them at your weekly meeting with your Preceptor

- 1) Concern/Question

answer

- 2) Concern/Question

answer

- 3) Concern/Question

answer

# Summary of Orientation Progress Week One

- Date:
- Progress with behavioral objective—Factors to consider: ability to function independently, works well with staff, positive attitude, knowledgeable, appropriately seeks advice, accepts constructive criticism, actively participates in process:
- Progress with Completion Skill Matrix:
- Modules and Scenario Completion:

# Sample Summary Week One cont.

Facility tour	✓	Overview of documentation	✓	Utilization of micromedix etc	✓
Who is Who	✓	Successful completion of skill matrix		Utilization of pyrmed System	✓
Scavenger Hunt	✓	POC testing completion	✓	Use of telephone system and customer Service	✓
Review patient and room preparation	✓	Fire safety, infection control and HIPPA & FERPA	✓		
Use of modules and resources on line and scenarios	✓	Completion of medication module	✓		

**Plan for Completion of Deficiencies from Above List:**

**Areas to Focus on Next Week:**

Now it is Your Turn To Create Your Plan

